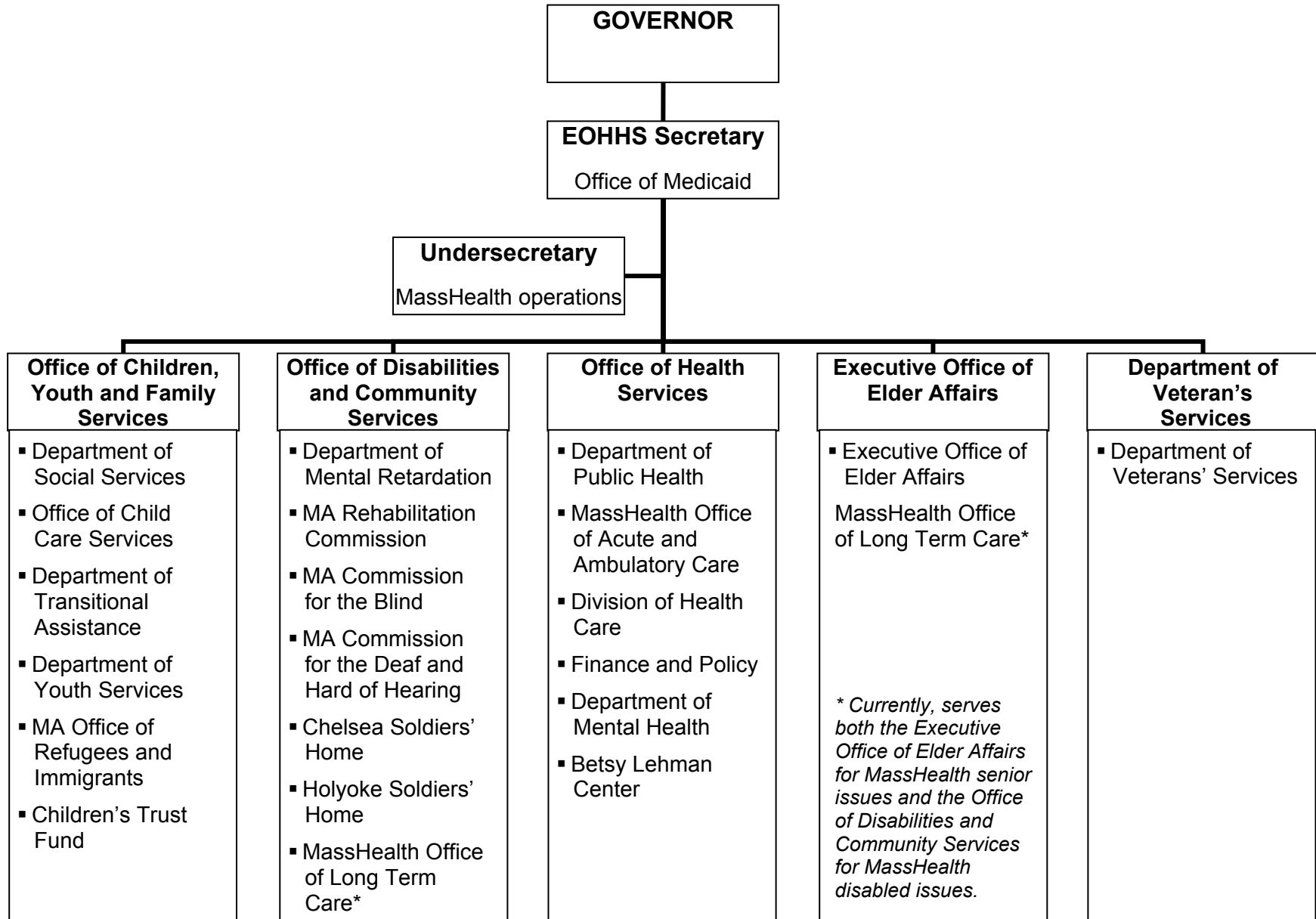


Executive Office of Health and Human Services: Offices and Agencies



The Massachusetts Human Service Delivery System: How it Works

- ◆ The Executive Office of Health and Human Services (EOHHS) is responsible for a \$2.5 billion Purchase of Service (POS) budget that includes 50,000 contracted employees. In addition to the POS funding, MassHealth provides long-term support services through third-party billing.
- ◆ Most of the agencies within EOHHS contract with non-profit community provider organizations.
- ◆ The Operational Services Division (OSD) of the Executive Office of Administration and Finance oversees the purchase of services by EOHHS agencies.
- ◆ In addition to the OSD, the following play a role in providing oversight for human service contracts: State Auditor, Secretary of State, Attorney General and the Comptroller.
- ◆ The advantage of a community-based system is that it can be more client-focused, and that providers will compete with innovative and cost-effective proposals. Non-profits, which are community-connected, are particularly effective as they are able to achieve a better level of integration.
- ◆ For over 15 years, state contracts have neglected to address increased inflationary costs associated with providing services in the community (fuel, housing, health insurance, cost-of-living adjustments, etc.). This means that the purchase of services funding level is no longer tied to real costs.

Why Community?

OPTIONS – Individuals with disabilities have the same dreams and goals for housing and community connections that we all strive for.

ACCOMMODATIONS – Individuals with disabilities are in many walks of life and may require accommodations to ensure access to their community and workplace.

SUPPORTED LIVING – Individuals with disabilities have progressed from living in institutions, to living in community group homes, to newer settings called supported living, where a person's home and support services can be personalized to fit individual needs.

FAMILY SUPPORT – Services to assist children, teens, and their families.

TURNING 22 – The phrase used to describe students who “age out” of their special education settings funded largely by local school districts. Good school systems help students prepare for adulthood and the world of work.